

Bolts

LEVER ACTION FLUSH BOLTS

MHL 55.01

Flush Bolt

Sizes: 150 x 19mm, 203 x 19mm, 250 x 19mm,
305 x 19mm, 150 x 25mm, 203 x 25mm,
250 x 25mm, 305 x 25mm.

Available with extended throw bolt (203mm
SCP finish only).

Finishes: SAA, Polished Brass, BMA,
Satin Chrome, Polished Chrome.



MHL 55.01



MHL 55.02

SUNK SLIDE FLUSH BOLT

MHL 55.02

Slide Bolt

Size: 102 x 17 mm.

Finishes: Polished Brass, Polished Chrome,
Satin Nickel.



MHL 55.03

KNOB SLIDE FLUSH BOLT

MHL 55.03

Slide Flush Bolt

Sizes: 150 x 25mm, 229 x 25mm,
305 x 25mm.

Finishes: SAA, Polished Brass, BMA,
Satin Chrome, Polished Chrome.

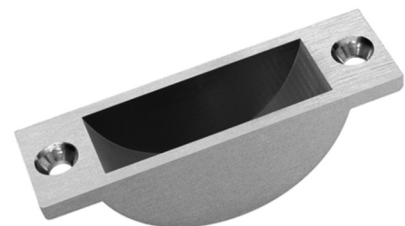
SOCKETS

MHL 55.04

Easy-Clean Boaf Socket

To Suit Bolt Size: 13 mm.

Finishes: Polished Brass, BMA, SAA.



MHL 55.04

MHL 55.05

Dust Excluding Sockets - Wood

To Suit Bolt Size: 12 mm.

Finishes: Polished Brass, BMA, Chrome.



MHL 55.05

MHL 55.06

Dust Excluding Sockets - Concrete

To Suit Bolt Size: 12 mm.

Finishes: Polished Brass, BMA, Chrome.



MHL 55.06

Bolts

MHL 55.07

Straight Barrel Bolt

Sizes: 75 x 25mm, 102 x 25mm,
152 x 25mm, 152 x 32mm,
203 x 32mm, 152 x 38mm,
200 x 38mm, 250 x 38mm.

Finishes: SAA, Polished Brass,
Polished Chrome,
Satin Chrome.



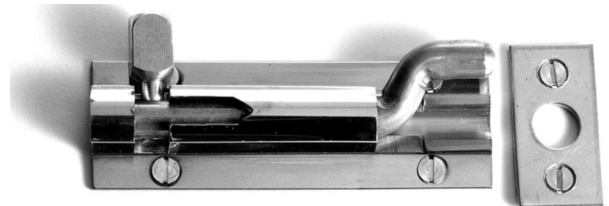
MHL 55.07

MHL 55.08

Necked Barrel Bolt

Sizes: 75 x 25mm, 102 x 25mm,
152 x 25mm, 152 x 32mm,
203 x 32mm, 152 x 38mm,
200 x 38mm, 250 x 38mm.

Finishes: SAA, Polished Brass,
Polished Chrome,
Satin Chrome.



MHL 55.08

MHL 55.09

Surface Bolt

Sizes: 102, 152, 202, 254 mm.

Finishes: Polished Brass,
Polished Chrome,
Satin Chrome.



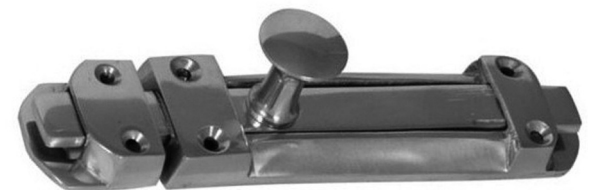
MHL 55.09

MHL 55.10

Surface Slide Bolt

Sizes: 102, 152, 203 mm.

Finishes: Polished Brass,
Polished Chrome.



MHL 55.10

MHL 55.11

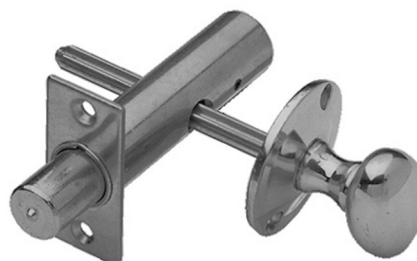
Mortice Bolt

Overall Depth: 60 mm.

Backset: 32, 45, 57 mm.

Finishes: Polished Brass,
Polished Chrome,
Satin Chrome, Bronze.

Knob: 32 x 21 mm.



MHL 55.11

Bolts

TOWER BOLTS

MHL 55.12

Tower Bolt

Sizes: 76, 102, 152, 203, 254, 305 mm.

Finishes: Black Japanned, Galvanised.



MHL 55.12

PADLOCK BOLTS

MHL 55.13

Padlock Bolt

Sizes: 150, 203, 254, 305 mm.

Finishes: Black Japanned, Galvanised.



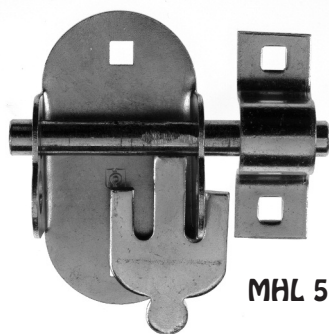
MHL 55.13

MHL 55.14

Oval Padlock Bolt

Size: 100 x 50 mm.

Finish: Galvanised.



MHL 55.14

MONKEY TAIL BOLTS

MHL 55.15

Monkey Tail Bolt

Sizes: 305, 375, 450, 610, 750, 900 mm.

Finishes: Black Japanned, Galvanised.



MHL 55.15

FOOT BOLTS

MHL 55.16

Foot Bolt

Size: 200 mm.

Finishes: Black Japanned, Galvanised.



MHL 55.16

CHAIN BOLT

MHL 55.17

Chain Bolt

Size: 200 mm.

Finishes: Black Japanned, Galvanised.



MHL 55.17

Indicating Bolts

INDICATING BOLTS

MHL 55.18

Indicating Bolt

Size: 70 x 30 mm

Finish: SAA.



MHL 55.18

MHL 55.19

Sliding Door Indicating Bolt

Size: 78 x 40 mm

Finish: SAA.



MHL 55.19

MHL 55.20

Indicating Bolt

Size: 65 x 35 mm

Finish: Polished Brass.



MHL 55.20

MHL 55.21

Indicating Bolt

Size: 66 x 41 mm

Finishes: Electro-Brass, Satin Chrome,
Polished Chrome.



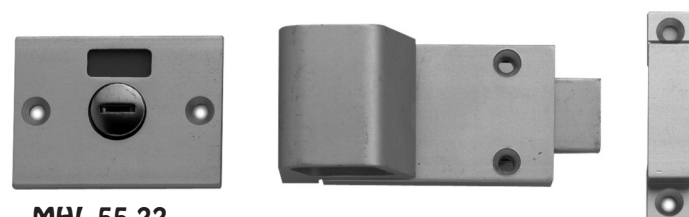
MHL 55.21

MHL 55.22

Indicating Bolt

Size: 60 x 35 mm

Finish: SAA.



MHL 55.22

Facility Indicator Bolt

FACILITY FURNITURE

MHL 55.23

Application:

Suitable for toilet / bathroom doors where ease of operation is desired.

Suitable for hinged and sliding doors.

Surface mounted.

Bolt-through fixing - can be fitted directly to cubicle or flush panel door.

Exterior pull may be fitted at 90, 180, 270, or 360°.

Hand must be stated when ordering.

Operation:

Lever mechanism.

Locking bolt connected directly to lever handle at 90°.

Vertical position of lever handle bolts door, can be seen by occupant.

Lever handle travel limited to 30° by screw through centre of backplate - can be increased to 90° by removing screw.

Features:

Red and white occupancy signal.

Coin operated emergency release.

Material:

Aluminium with black plastic moulded end caps

Handle Projection 77mm

Plate Projection 44mm


Bolt Length 41mm

Finishes:

AS - Anodised Silver

AG - Anodised Gold

Standards:

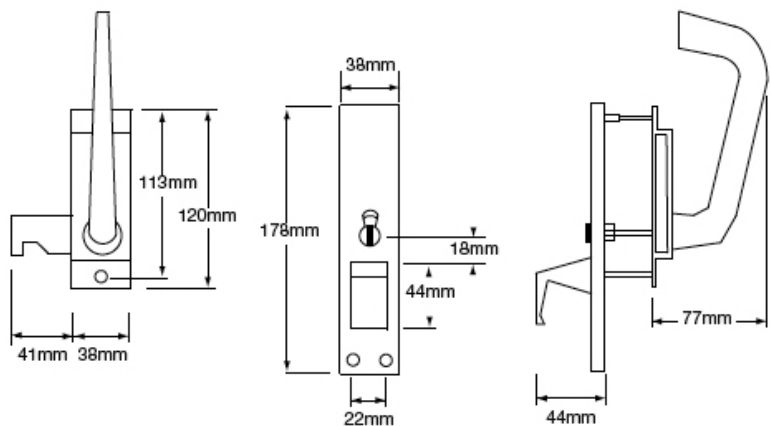
 Assists in fulfilling duties required under the Disability Discrimination Act (DDA). Satisfies recommendations of BS8300 and Approved Document M (ADM).

N.B:

Hand must be stated when ordering (right hand illustrated)



MHL 55.23



Double Action Pivot & Emergency Release

MHL 55.24

Frame Mounted Double Action Pivot Set (medium duty)

Allows the door to swing in either direction.

Minimum door thickness 44mm.

Bottom bracket is frame mounted.

Medium duty for internal doors.

For doors weighing up to 80kg when floor mounted and up to 1100mm wide.

Finish: Brushed Stainless Steel.



MHL 55.24

MHL 55.25

Emergency Release Door Stop

Allows Double Action doors to operate as single swing when hung on pivots.

Emergency access is gained by depressing the stop and pulling the door outwards.

Stop release resets automatically.

Rubber inserts for quieter action.

Finish: Brushed Stainless Steel.



MHL 55.25

Cavell Suite - Single Panic Bolt

MHL 55.26

Application

Suitable for single or double doors with plain meeting stiles. Suitable for single doors up to 2440mm height x 1220mm wide (extended top shoots available).

SUITABLE FOR USE IN OPEN PUBLIC AREAS (in accordance with BS EN 1125: 1997)

Please note: For double **NON** rebated plain edge doors fit 2 x MHL 55.26

Standards and Certification



Fire Safety: Included in a successful fire test to BS EN 1634 Part 1: 2000. For use on 30 min fire doors



CE Marked: Declaration of conformity available on request

Standard Features

Automatic top trip

Two-point locking

Diecast control boxes

Follower on main box for use with **CAVELL SUITE** locking attachments

Anti-thrust device preventing leverage of top and bottom shoots

Oval steel rods

Self handing

Supplied with "W" clip for use with a rim cylinder on external side

"Push Bar To Open" signage supplied

Finishes

Silver

Gold

Black

Polished Brass

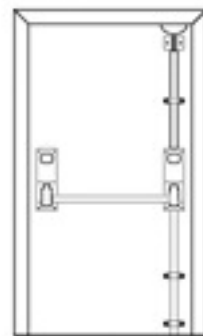
Polished Stainless Steel – Polished Chrome

Satin Stainless Steel – Satin Chrome

RAL colours to special order only



MHL 55.26



Cavell Suite - Reversible Panic Latch

MHL 55.27

Application

Suitable for single doors or first opening leaf of double doors with rebated meeting stiles. Suitable for single doors up to 1220mm wide.

SUITABLE FOR USE IN OPEN PUBLIC AREAS (in accordance with BS EN 1125: 1997)

Standards and Certification



Fire Safety: Included in a successful fire test to BS EN 1634 Part 1: 2000. For use on 30 min fire doors



CE Marked: Declaration of conformity available on request

Standard Features

Single-point locking

Diecast control boxes

Follower on main box for use with **CAVELL SUITE** locking attachments

Oval steel pushbar

Fully reversible

Supplied with "W" clip for use with a rim cylinder on external side

"Push Bar To Open" signage supplied

Finishes

Silver

Gold

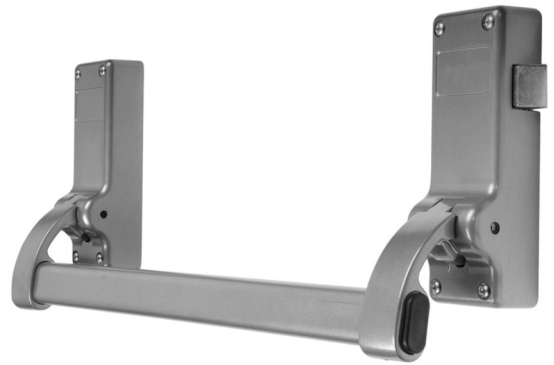
Black

Polished Brass

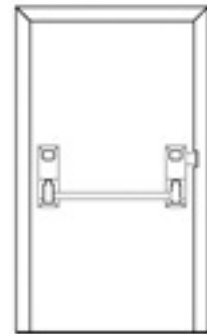
Polished Stainless Steel – Polished Chrome

Satin Stainless Steel – Satin Chrome

RAL colours to special order only



MHL 55.27



Cavell Suite - Combination Unit for Double Rebated Doors

MHL 55.28

Application

To be used on double rebated door sets with each single door leaf up to 2440mm high x 1220mm wide. **SUITABLE FOR USE IN OPEN PUBLIC AREAS** (in accordance with BS EN 1125: 1997)

Standards and Certification



Fire Safety: Included in a successful fire test to BS EN 1634 Part 1: 2000. For use on 30 min fire doors



CE Marked: Declaration of conformity available on request

Comprises

MHL 55.26 single panic bolt

MHL 55.27 reversible panic latch

MHL 55.99 double door striking plate

"Push Bar To Open" signage

For full product details please refer to the individual product pages in this brochure.

Finishes

Silver

Gold

Black

Polished Brass

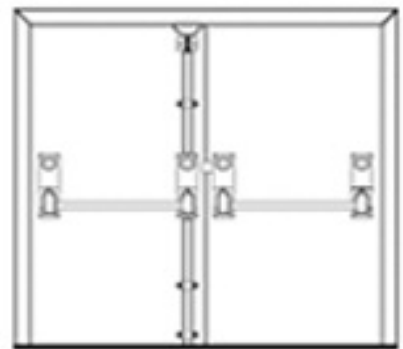
Polished Stainless Steel – Polished Chrome

Satin Stainless Steel – Satin Chrome

RAL colours to special order only



MHL 55.28



Cavell Suite - Combination Unit for Double Rebated Doors

MHL 55.29

Application

Suitable for use only on double door sets in accordance with BS EN 179. THIS UNIT SHOULD NOT BE USED IN OPEN PUBLIC AREAS

Standards and Certification



Fire Safety: Included in a successful fire test to BS EN 1634 Part 1: 2000. For use on 30 min fire doors



CE Marked: Declaration of conformity available on request

Comprises

MHL 55.26 single panic bolt

MHL 55.30 reversible push pad

MHL 55.99 double door striking plate

"Push Bar To Open" signage

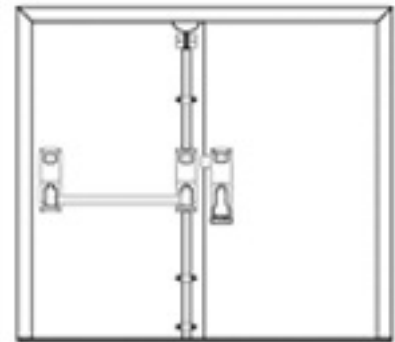
For full product details please refer to the individual product pages in this brochure.

Finishes

Silver

Satin Stainless Steel

RAL Colours to special order only



Cavell Suite - Reversible Push Pad

MHL 55.30

Application

Suitable for single doors or first opening leaf of double doors with rebated meeting stiles.

Please Note: MHL 55.30 reversible push pad SHOULD NOT BE USED IN OPEN PUBLIC AREAS (in accordance with BS EN 179)

Standards and Certification



Fire Safety: Included in a successful fire test to BS EN 1634 Part 1: 2000. For use on 30 min fire doors

CE Marked: Declaration of conformity available on request

Standard Features

Single point locking

Diecast control boxes

Follower on main box for use with MHL 55.32 locking attachment

Reversible

"Push Pad To Open" signage supplied

Suitable for any door width

Finishes

Silver

Gold

Black

Polished Brass

Polished Stainless Steel – Polished Chrome

Satin Stainless Steel – Satin Chrome

RAL colours to special order only



MHL 55.30



Cavell Suite - Push Pad Single Panic Bolt

MHL 55.31

Application

Suitable for single doors up to 2440mm high.

Please Note: MHL 55.31 push pad panic bolt **SHOULD NOT BE USED IN OPEN PUBLIC AREAS** (in accordance with BS EN 179)

Standards and Certification



Fire Safety: Included in a successful fire test to BS EN 1634 Part 1: 2000. For use on 30 min fire doors



CE Marked: Declaration of conformity available on request

Standard Features

Maintains all of the feature benefits of the MHL 55.26 Single Panic Bolt with the exception of the Cross Bar Operator which is replaced with a Push Pad

Recommended as a replacement for MHL 55.30 when additional security is required "Push Pad To Open" signage supplied

Finishes

Silver

Gold

Black

Polished Brass

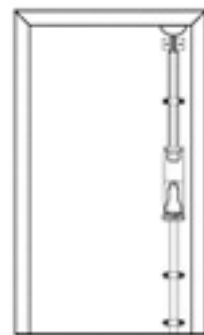
Polished Stainless Steel – Polished Chrome

Satin Stainless Steel – Satin Chrome

RAL colours to special order only



MHL 55.31



Cavell Suite - External Locking Attachments

MHL 55.32 & MHL 55.32K

Application

Suitable for use with all units of the **CAVELL SUITE** Panic & Emergency Exit Hardware range and also other manufacturers ranges.

Standards and Certification



Fire Safety: Included in a successful fire test to BS EN 1634 Part 1: 2000. For use on 30 min fire doors

There are no current EN standards or CE marking requirement for External Locking Attachments to operate Panic & Emergency Exit Hardware Devices, however both the MHL 55.32 & MHL 55.32K have been successfully third party tested when fitted with Panic & Emergency Exit Hardware.

Standard Features

Back to back fixing with the internal device prevents unsightly drill holes only when fitted with **CAVELL SUITE** Panic & Emergency Exit Hardware Diecast control boxes

MHL 55.32 lift up pad handle designed to snap when excessive force is applied

MHL 55.32K unique hexagonal knob design

Both models available without cylinder

Supplied with 8mm x 90mm spindle

Finishes

Silver

Satin Stainless Steel

Gold

Black

Please note metallic finishes are not recommended for external use, but are available to special order.



MHL 55.32



MHL 55.32K

Cavell Suite - External Locking Attachment

MHL 55.33

A mechanical external locking system to suit the CAVELL SUITE emergency hardware range

Standards and Certification

Performance: Codelock external locking attachments have been successfully third party tested when used with CAVELL SUITE Emergency Exit Hardware.

Fire resistance: successfully assessed to BS EN 1634 Part 1: 2001

Features

Based on the MHL 25.97 Codelock, the unit is supplied complete with spindles and patented springs. This universal unit is suitable hinged either hand and up to 35-60mm thickness. The PVD finish ensures a lifetime guarantee on external use.

Finishes

Satin Stainless Steel
Polished Brass



MHL 55.33

Panic Hardware

MHL 55.34

Redlam Bolt

Operation: Breaking the ceramic tube with the hammer provided releases the spring-loaded bolt automatically.
Padlock not included.

Finish: Sprayed Silver.

Spare tubes available.



MHL 55.34

MHL 55.35

Cooperbolt Alarm Door Bolt

Door is bolted except in an emergency.
Pressing the green 'Push' button releases the bolt.
Suitable for single doors.

Once opened, bolt can only be reset by keyholder (where applicable).

Easy to fit (detailed instructions provided).

Dimensions (main body): 135 x 85 mm

Options: Model 103: as standard model, but incorporating battery operated alarm, which will sound if the door is opened.

Model 103W: As 103, but with water resistance.

Model 103S: As 103, but featuring additional on/off key switch allowing use as standard model.

Finish: Sprayed Silver.



MHL 55.35

MHL 55.36

Dorgard Fire Door Retainer

Dorgard is a device designed to safely hold open a fire door and automatically release the fire doors upon the sound of a fire alarm.

Dorgard can be used to hold the fire door open in any position.

Dorgard is a Complete Wireless Solution as it is a Battery Operated Self Contained device.

The Dorgard constantly listens for a sound above 65 db. Once the Fire Alarm sounds the Dorgard will pick up the noise and approximately after 14 seconds the Dorgard will release the Fire Door.

The Dorgard is also capable of Automatically Releasing Doors at night for Maximum Protection.

Available in Red, White, Black and Brown.



MHL 55.36

MHL 55.37

Key Box

Operation: Spring-loaded outer casing locks keys required for opening emergency doors inside the key box.

Finish: Red Plastic.

Spare glasses available.

Hammer and chain not included.

Please specify when ordering.



MHL 55.37